

Head Office:
 Dixon Kelley Estate Agents
 1 Penn Court
 Station Road, West Moors
 Dorset. BH22 0JJ

DORSET PARK HOMES

DRAFT

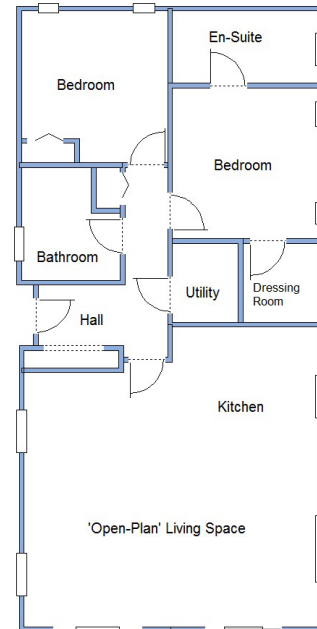
www.dorsetparkhomes.com

Telephone: 01202 877511

3 Laurel Close, Lone Pine Park, Ferndown. BH22 8FH



Outstanding New Luxury Park Home in Prestigious Park



This drawing has been prepared for diagrammatic purpose only. Not to scale.

2-Bedroom Park Home - approx 45' x 22'

Accommodation & approximate room dimensions:

- Tingdene 'Alaska'
- Spacious Entrance Hall
- 'Open-Plan' Living Space: approx 21' x 21' max. Double doors to Raised Deck. Vaulted ceiling.
- Kitchen/Diner: A beautifully designed kitchen with high-gloss quality units having a good range of base & wall cupboards. High level double oven & microwave, hob & cooker hood. Integrated dishwasher & fridge/freezer. Island unit with breakfast bar.
- Utility Room: Integrated washer/dryer. Combination gas boiler.
- Bedroom 1: approx 10'7" x 10'3" PLUS Dressing Room.
- Luxury En-Suite Shower Room
- Bedroom 2: approx 10'8" x 10'3". Fitted wardrobes.
- Luxury Bathroom
- Gas Central Heating & PVCu Double-Glazing
- Raised Sun Deck
- Parking on Plot
- Age Restriction 55+ 1 dog Considered
- High quality home with stylish interior design.
- Fully Furnished

Heathland Views



Price: £450,000

Pitch Fee: Approx 223.65 per month

Subject to Annual review

Council Tax Band: 'A'

Tenure: 1983 Mobile Homes Act Agreement

VIEWING STRICTLY BY APPOINTMENT WITH THE VENDOR'S AGENT Dorset Park Homes 01202 877511

IMPORTANT NOTE: These particulars are believed to be correct but their accuracy is not guaranteed. They do not form part of any contract. Nothing in these particulars shall be deemed to be a statement that the property is in good structural condition or otherwise, nor that any of the services, appliances, equipment or facilities are in good working order or have been tested. Purchasers should satisfy themselves on such matters prior to purchase. Ref.W04509

The recommended specialist in Park Home sales

Proprietor: Simon Dixon



